

We offer: house plans, floor plans modification, luxury, craftsman and lake home plans, townhomes & commercial building design.

America's Favorite House Plans

Michael W.Garrell & James H.Klippel

Home Search House Plans Featured House Plans Luxury Communities News Blog Playhouse Design About Us Contact Us

[return to search](#)

Price: \$1995

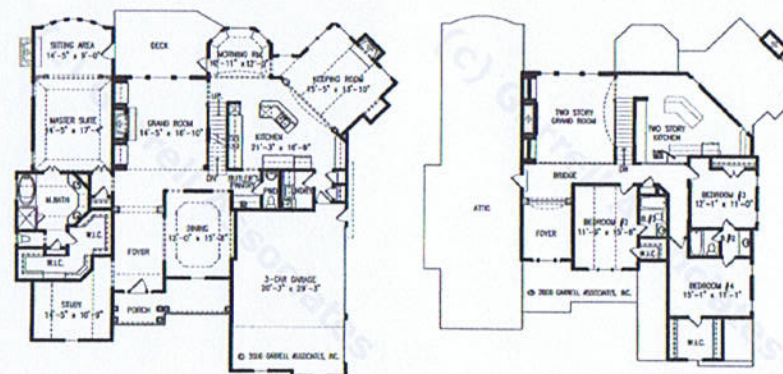
[add cart](#) [print](#)

Tres Maison 001_01049

Downloads:

Details:

Bedrooms: 4
 Baths: 3.50
 Width: 68'2"
 Depth: 65'7"
 1st Floor: 2523
 2nd Floor: 870
 Total Living Area: 3393
 Terrace Square Footage: N/A
 Foundations: Basement
 Master Bedroom: On-main
 Plan Type: Master Down, 2 Story



Built with partial basement

Plan Collections: Traditional, Master Down, European Manor



[Home](#) | [Search House Plans](#) | [Featured House Plans](#) | [About Us](#) | [Contact Us](#)

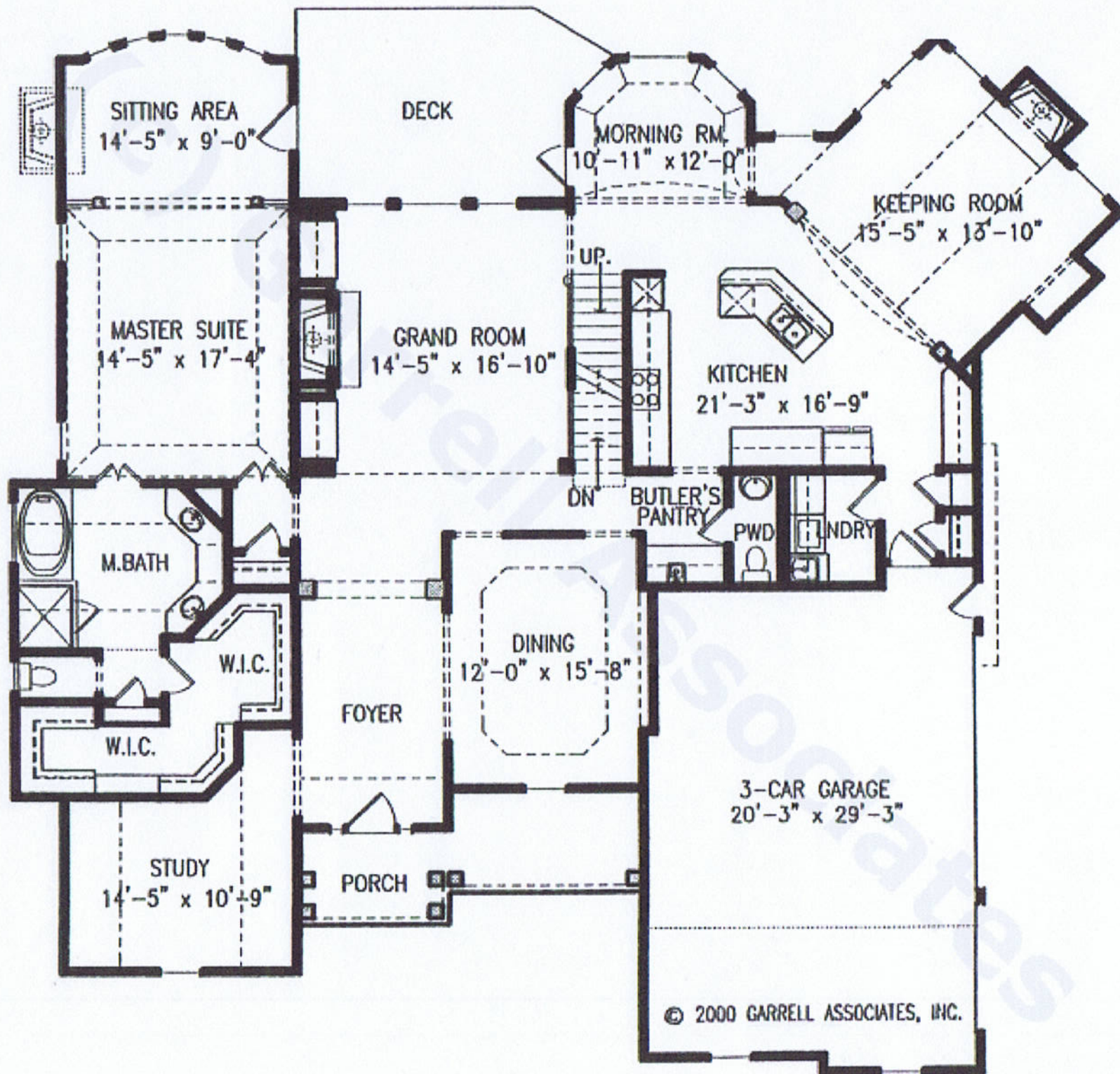
790 Peachtree Industrial Blvd
Suwanee GA 30024
Toll-Free: 1-877-215-1455

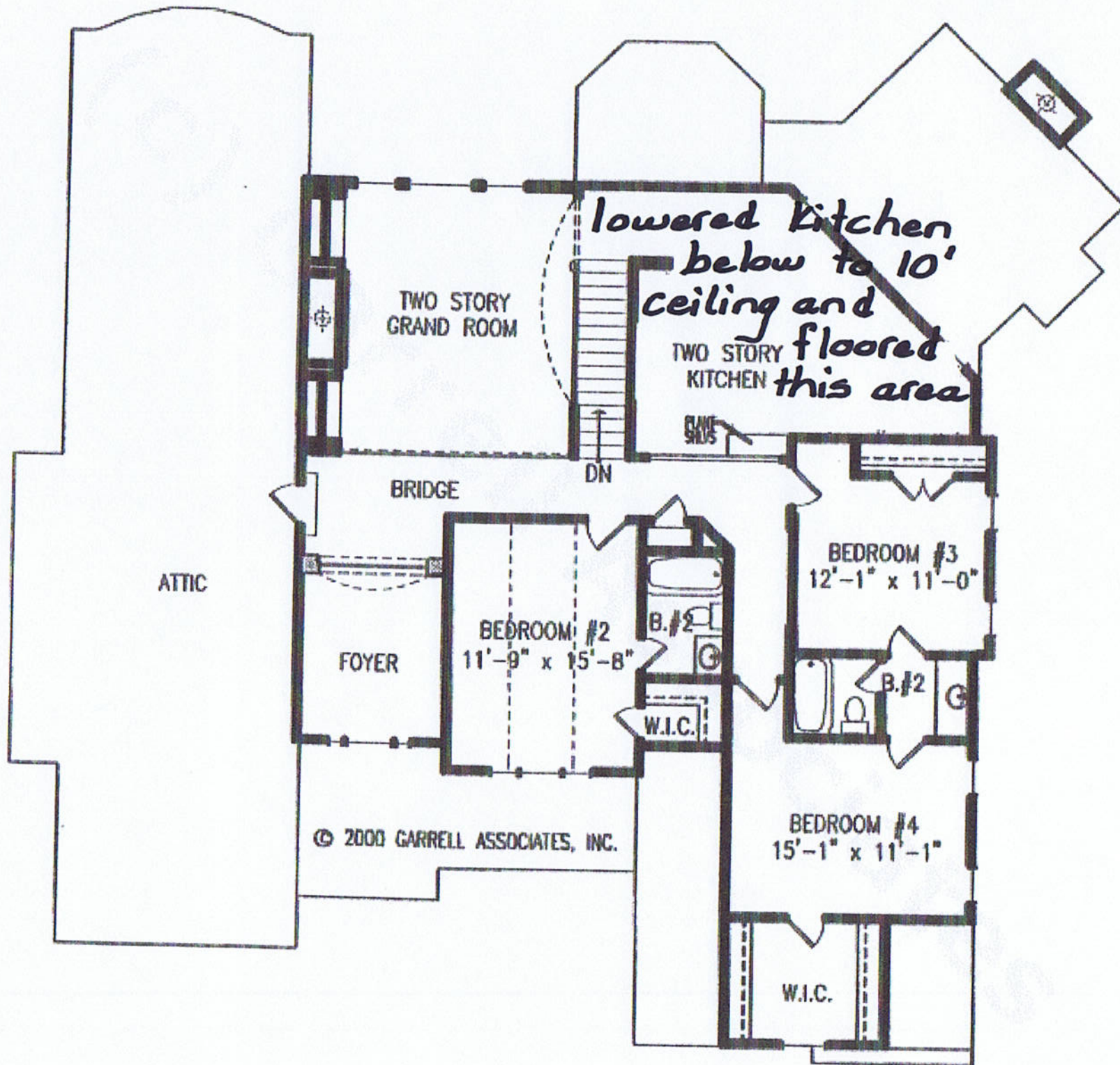
Home Plan Resources

- House Plans - Garrell Associates, Inc.
- House Plans - Planet House Plans
- Home Plans - American Gables, Inc.
- House Plans - America's Best House Plans
 - House Plans - House Plans Direct

© 1993-2009 Garrell Associates, Inc. All Rights Reserved.







TWO STORY
GRAND ROOM

lowered Kitchen
below to 10'
ceiling and
floored
this area

TWO STORY
KITCHEN

DN

BRIDGE

DN

ATTIC

FOYER

BEDROOM #2
11'-9" x 15'-8"

B.#2

BEDROOM #3
12'-1" x 11'-0"

B.#2

W.I.C.

BEDROOM #4
15'-1" x 11'-1"

W.I.C.

© 2000 GARRELL ASSOCIATES, INC.